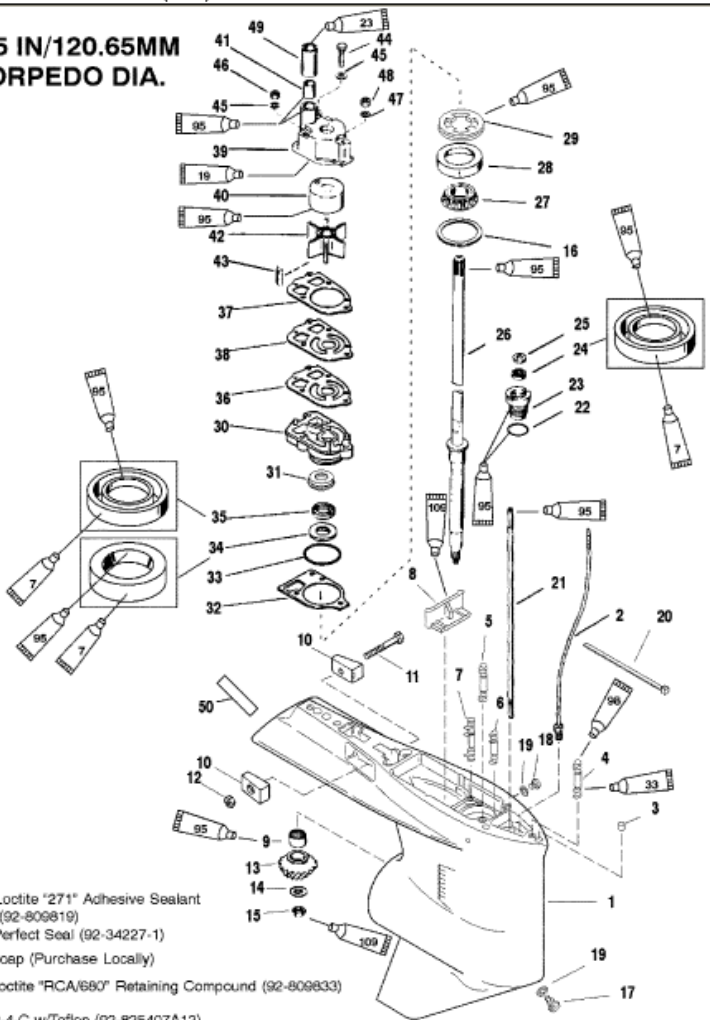


**4.75 IN/120.65MM
 TORPEDO DIA.**



- Loctite "271" Adhesive Sealant (92-809819)
- Perfect Seal (92-34227-1)
- Soap (Purchase Locally)
- Loctite "RCA/680" Retaining Compound (92-809833)
- 2-4-C w/Teflon (92-825407A12)
- GM Silicone Sealer (92-91600-1)

Parts List						
Ref	Class	Part	Description	Qty	Comment	Footnote
1	1647	9148A93	GEAR HOUSING	1	(BLACK) (BASIC)	
1	1647	9148A94	GEAR HOUSING	1	(GRAY) (BASIC)	
2	22	85822A10	CONNECTOR ASSEMBLY	1		
3	17	43044	DOWEL PIN	2		
4	16	18978 3	STUD (3-11/16 IN.)	1		
5	16	57920 3	STUD (2-1/16 IN.)	2		
6	16	56297 2	STUD (3-3/8 IN.)	1		
7	16	30667	STUD (3-1/8 IN.)	2		
8		67891	FILLER BLOCK	1		
9	31	42647A 1	ROLLER BEARING	1		
10		826134	ANODE	2		
11	10	40003 33	SCREW	1		
12	11	826833 6	NUT	1		
13		NSS	PINION GEAR	1	(1.87:1 - 15 TEETH) (150) (PART	3
13	43	44101 3	PINION GEAR -	1	(2.1 - 14 TEETH) (135) (ALSO PAF	
14	12	92721	WASHER	1		
15	11	35921	NUT	1		
16	15	42637A 1	SHIM SET	AR		6
17	22	67892A 1	SCREW-DRAIN (MAGNETIC)	1		
18	10	79953A 2	SCREW-GREASE FILLER	1		
19	12	19183	WASHER	2		10,9
20		56762	STA-STRAP	1		
21		78902 2	SHIFT SHAFT	1		
22	25	25439	O-RING	1		2,9
23	23	77631A 2	BUSHING ASSEMBLY	1		9
24	26	816464 1	OIL SEAL	1		9
25	12	77674	WASHER-RUBBER	1		
26	45	44209 1	DRIVE SHAFT	1		
27	31	36387A 1	ROLLER BEARING	1		
28		NSS	CUP	1		3
29		824519	RETAINER	1		
30	46	42579A 3	WATER PUMP BASE	1		
31		NSS	RETAINER	1		3
32	27	42631 1	GASKET	1		2,10,9
33	25	90011	O-RING	1		2,10,9
34	26	89238	OIL SEAL	1		9
35	26	16977	OIL SEAL	1		9
36	27	85608 1	GASKET-LOWER	1		2,10,9
37	27	85609 1	GASKET-UPPER	1		2,10,9
38		32435	FACE PLATE	1		10
39	46	96149A 1	WATER PUMP BODY ASSEMBLY	1		10